



IMPORTANT SAFETY INFORMATION

This user manual contains important safety regulations. Any non-conforming use may result in personal injury or mechanical damage. Please read this user manual carefully before use as it provides key information about safety, use, assembly and maintenance of the Secretlab MAGNUS Desk Riser.

Ensure you have received all parts according to the **What's In the Box** section prior to installation. If any parts are missing or faulty, contact the Secretlab support team for replacements. This product contains small items that could be a choking hazard if swallowed. Keep these items away from children and pets. Do not overtighten the screws during installation. The Secretlab MAGNUS Desk Riser is designed for the Secretlab MAGNUS only. Alteration or modding of any factory components outlined in the What's In the Box section will automatically void your warranty.



This Desk Riser is not intended for use by children without adult supervision.



Do not exceed the maximum load capacity of the Desk Riser (70kg/154lb).



Exercise care during installation to avoid trapping fingers.



Do not dismantle or modify the Desk Riser. Do not install and use this Desk Riser on other desks other than the Secretlab MAGNUS.



WARNING: Keep your Desk Riser away from impacts once it is mounted onto the Secretlab MAGNUS.



Exercise care when installing the side covers to your Desk Riser to avoid being pinched.

PRODUCT SPECIFICATIONS

Product Dimensions: 868 (L) x 294 (W) x 154 (H) mm (34.2 x 11.6 x 6.1")

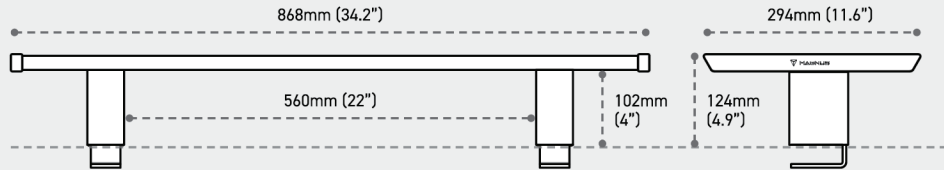
Product Weight: 6.4kg (14.1lb)

Weight Capacity: 70kg (154lb)

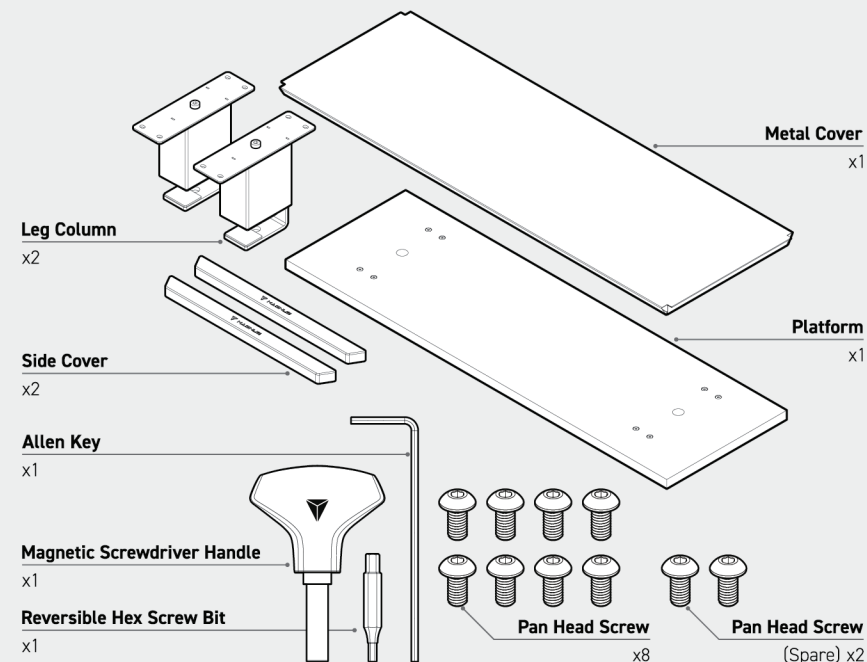
Compatible with:

Secretlab MAGNUS Single Monitor Arm, Secretlab MAGNUS Dual Monitor Arm,

Secretlab Magnetic Cable Anchors

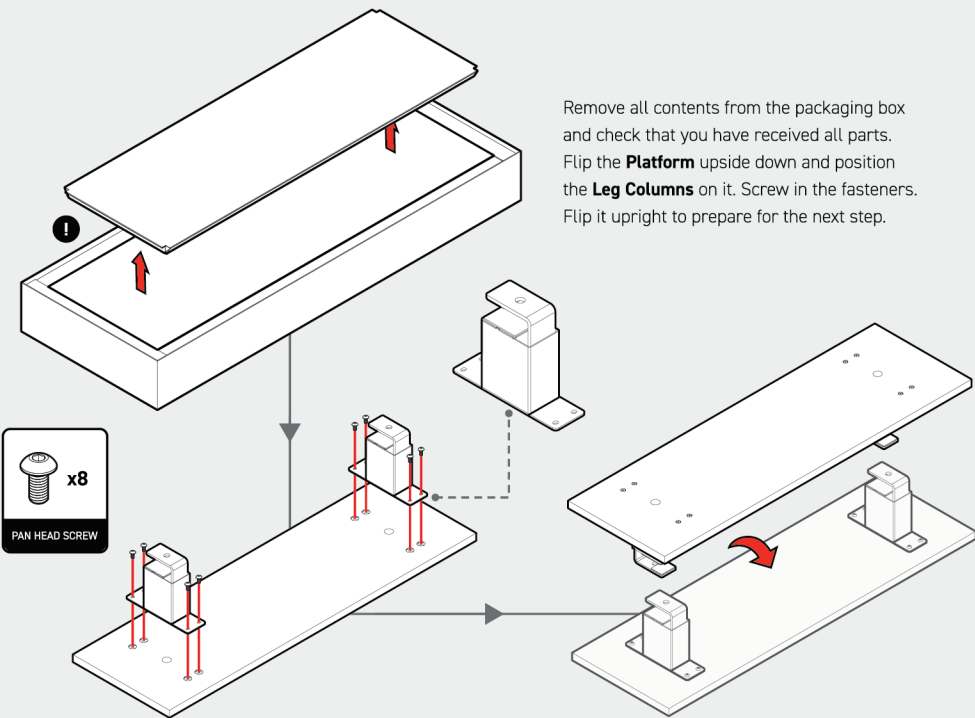


WHAT'S IN THE BOX



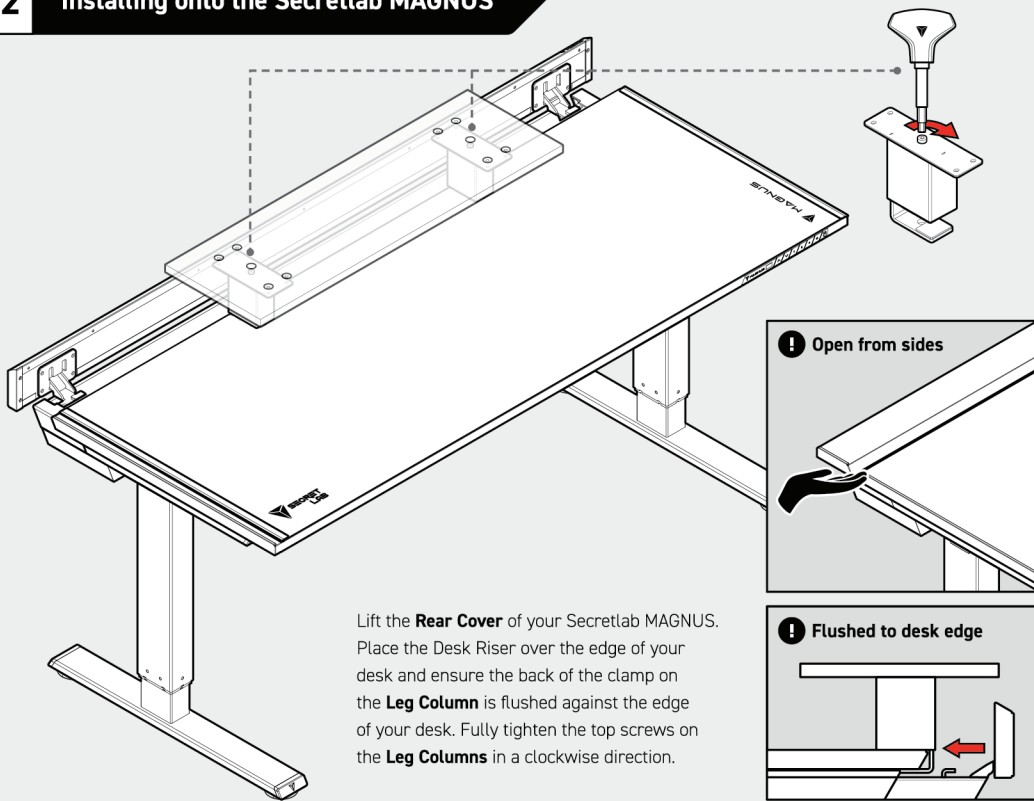
ASSEMBLY GUIDE

01 Assembling the Leg Columns



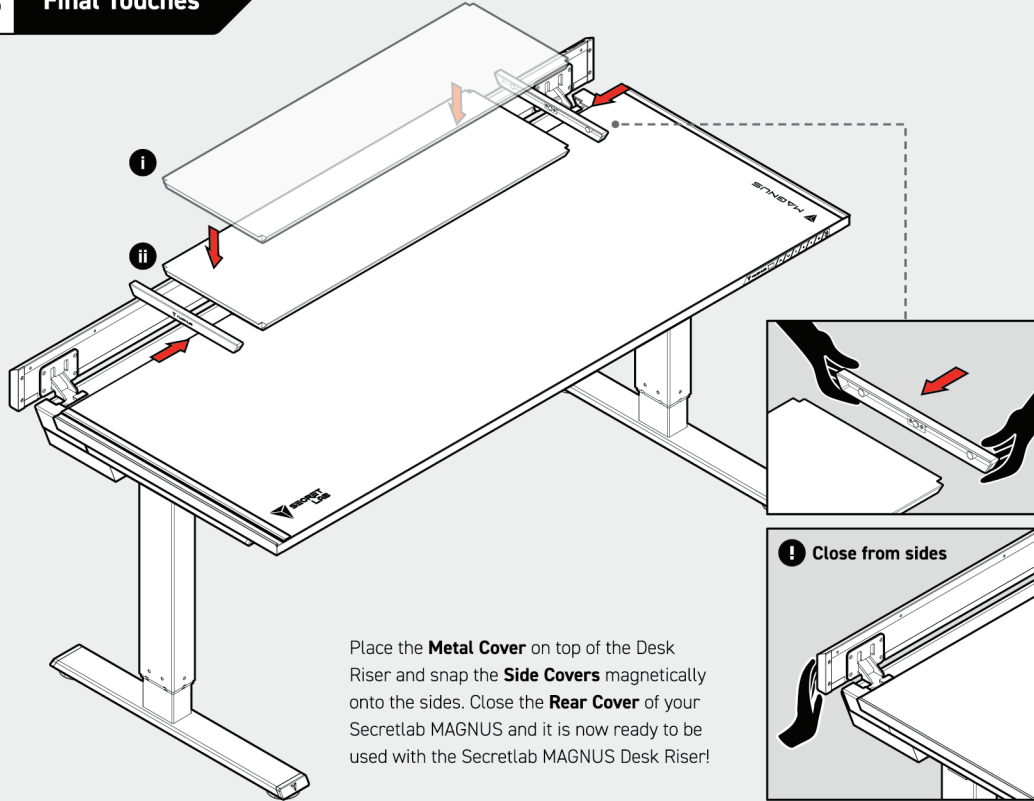
Remove all contents from the packaging box and check that you have received all parts. Flip the **Platform** upside down and position the **Leg Columns** on it. Screw in the fasteners. Flip it upright to prepare for the next step.

02 Installing onto the Secretlab MAGNUS



Lift the **Rear Cover** of your Secretlab MAGNUS. Place the Desk Riser over the edge of your desk and ensure the back of the clamp on the **Leg Column** is flushed against the edge of your desk. Fully tighten the top screws on the **Leg Columns** in a clockwise direction.

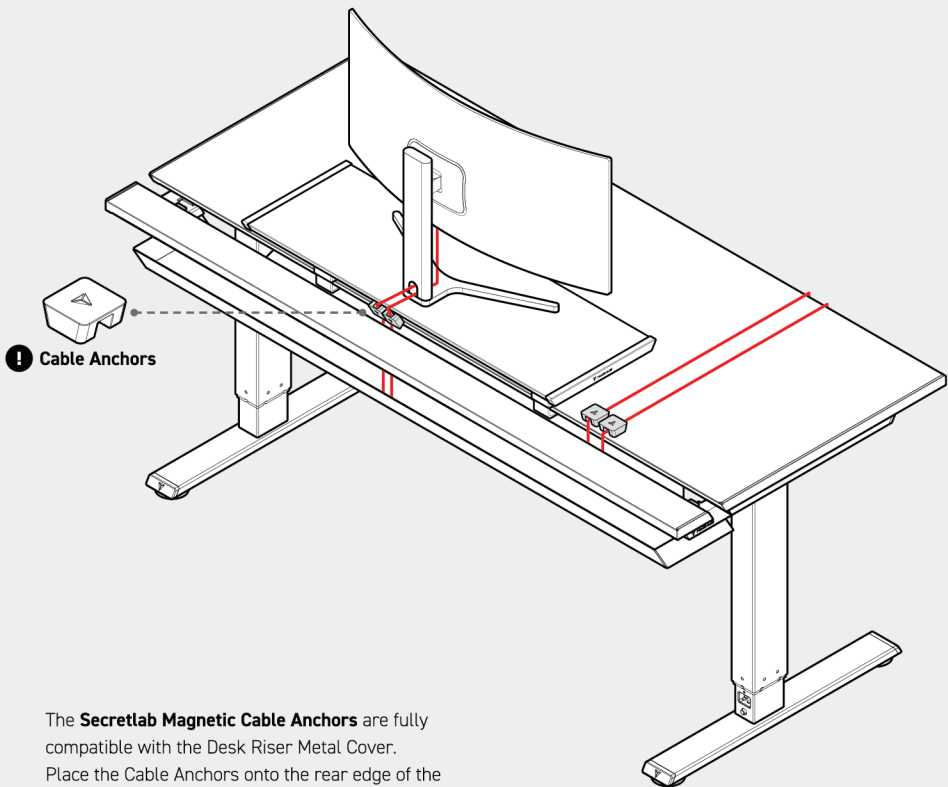
03 Final Touches



Place the **Metal Cover** on top of the Desk Riser and snap the **Side Covers** magnetically onto the sides. Close the **Rear Cover** of your Secretlab MAGNUS and it is now ready to be used with the Secretlab MAGNUS Desk Riser!

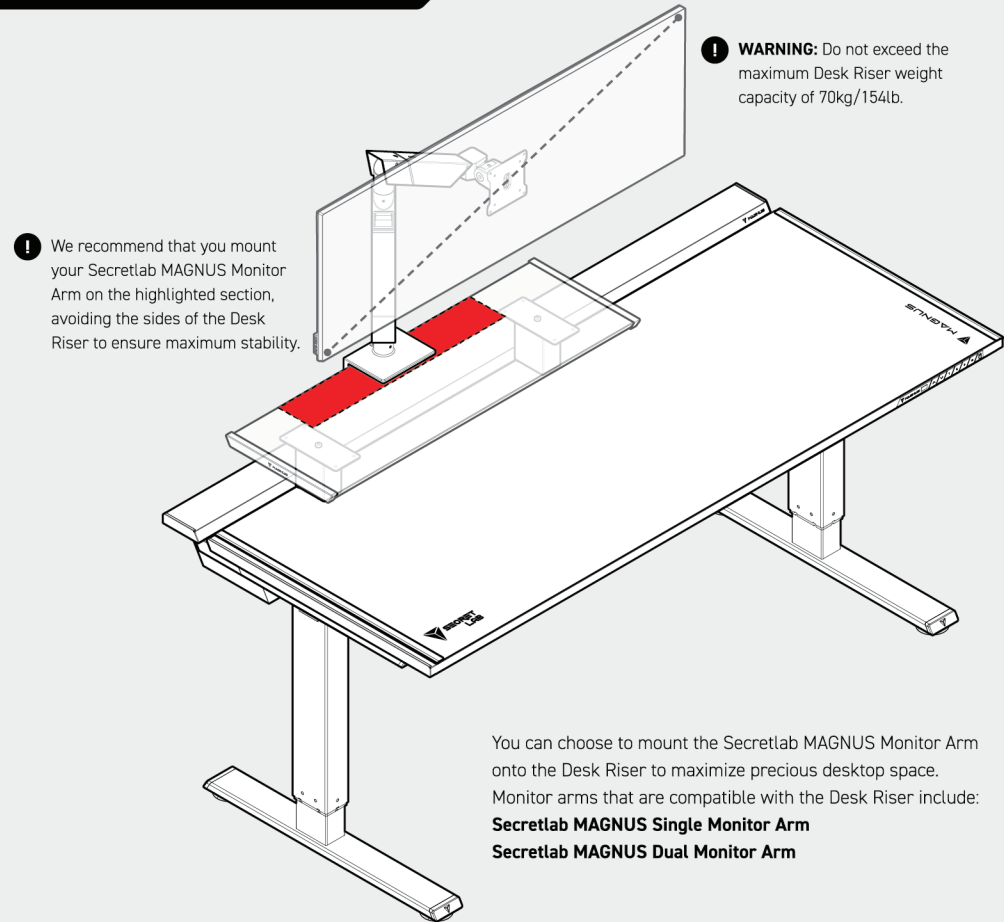
USAGE INSTRUCTIONS

Cable Management



The **Secretlab Magnetic Cable Anchors** are fully compatible with the Desk Riser Metal Cover. Place the Cable Anchors onto the rear edge of the Desk Riser to cleanly route the cables into the Cable Tray.

Secretlab MAGNUS Monitor Arms



! We recommend that you mount your Secretlab MAGNUS Monitor Arm on the highlighted section, avoiding the sides of the Desk Riser to ensure maximum stability.

You can choose to mount the Secretlab MAGNUS Monitor Arm onto the Desk Riser to maximize precious desktop space. Monitor arms that are compatible with the Desk Riser include:
Secretlab MAGNUS Single Monitor Arm
Secretlab MAGNUS Dual Monitor Arm

AFTERCARE GUIDE



Do not use outside of its intended usage
Improper use can damage your Desk Riser or even cause injuries. To ensure your safety, always follow the given instructions.



Do not overload your Desk Riser
Never place items heavier than the indicated maximum weight capacity of your Desk Riser. Doing so may affect your Desk Riser's ability to function as intended.



Do not abuse the Secretlab MAGNUS Desk Riser
Even the toughest of Desk Riser will not be able to stand up to rough and inappropriate use. Keep your Desk Riser away from impacts, drops and sharp objects.



Do not use abrasive scrubbers or harsh cleaners
Avoid abrasive cleaners as they can damage the powder-coated finish of your Desk Riser, potentially exposing the underlying metal to rust-inducing moisture.



Avoid exposure to direct or prolonged sunlight
Do not expose your Desk Riser to direct and prolonged periods of sunlight or heat sources as fading and cracking of the surface finish may occur.



Clean the metal top with slightly damp cloth
Use a solution of mild soap and warm water applied to a damp cloth to remove dirt and impurities. Dry with a clean cloth immediately afterwards.

USE AND LIABILITY



The Secretlab MAGNUS Desk Riser is designed for indoor use and dry work areas only. Under no circumstances does the manufacturer accept warranty claims or liability claims for damages caused from improper use or handling of the Desk Riser. For warranty terms and service or any other queries, scan the QR code or visit our website secretlab.co/support.



To view this manual in the following languages, please scan the QR Code to the left.
Pour consulter ce manuel dans les langues suivantes, veuillez scanner le QR code à gauche.
Um dieses Handbuch in den folgenden Sprachen anzuzeigen, scannen Sie bitte den QR-Code auf der linken Seite.
Scan de QR-code naar links om deze handleiding in de volgende talen te bekijken.
이 설명서를 다음 언어로 보시려면 왼쪽에 있는 QR 코드를 스캔하세요.
Untuk melihat manual ini dalam bahasa berikut, sila imbas Kod QR ke kiri.



SECRETLAB MAGNUS DESK RISER

More space for organization

The Secretlab MAGNUS Desk Riser was designed just for the Secretlab MAGNUS and MAGNUS Pro. It fits securely into the cable tray opening, so you never have to worry about it moving around, and retains full access to the rear hinged cover. With even more useable space on your desk, productivity has never come easier.

